



JENNIFER LAUREN
GALLERY

NOTTINGHAM
CASTLE



Nottingham
City Council

Information on the 'Kaleidoscopic Realms' exhibition

**Please do not remove this
booklet from the gallery**

This is an Easy Read resource
about 'Kaleidoscopic Realms'



CONTENTS PAGE

What is 'Kaleidoscopic Realms'?	3
The artists in the exhibition	6
Cameron Morgan - Gallery 1	7
Richard Hunt - Gallery 1	8
James Gladwell - Gallery 2	9
Leslie Thompson - Gallery 2	10
Michelle Roberts - Gallery 2	11
Nnena Kalu - Gallery 3	12
Siddharth Gadiyar - Gallery 3	13
Thompson Hall - Gallery 4	14
Wall activity in Gallery 4	15
Contact Details	16

WHAT IS 'KALEIDOSCOPIIC REALMS'?



x 8

'Kaleidoscopic Realms' is an exhibition of work by eight artists.



An exhibition is where you show something interesting to people.

This exhibition will show you art from each artist, and a film about each artist.



The eight artists all work out of supported studios across the UK.

A supported studio is a safe space where artists can be creative.



The artists in this exhibition are all learning disabled or neurodivergent artists.

They are based all over the UK.

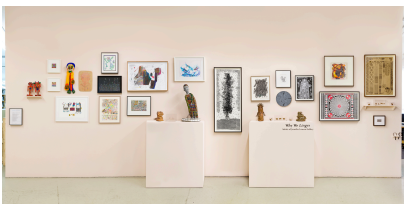
WHAT IS 'KALEIDOSCOPIIC REALMS'?



It has been co-curated by Jennifer Gilbert and Christopher Samuel. By co-curated we mean that they have selected the artists and artworks together, and planned how it will look in this space.



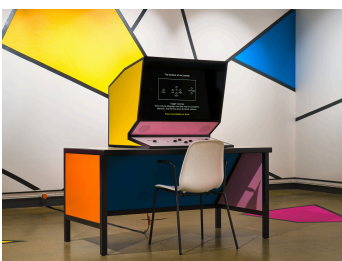
Jennifer runs the Jennifer Lauren Gallery. With the Gallery, Jennifer works with disabled and self-taught artists from around the world.



Jennifer organises exhibitions in different galleries and museums.



Christopher is a disabled artist. His work is about his identity as a black, disabled man and about representation. By representation we mean, how people are shown and spoken about in different ways, in different places.



WHAT IS 'KALEIDOSCOPIIC REALMS'?

SHIFT



'Kaleidoscopic Realms' is an exhibition produced by SHIFT.

SHIFT looks at the lives and artworks of learning disabled and neurodivergent visual artists from across the UK. Neurodivergent means someone's brain works in a different way to most people.



SHIFT was set up following conversations around the issues of where and how these artists' works are currently shown in galleries and museums.



It aims to promote these artists in a non-judgemental way. By this we mean, that their artwork will be looked at first and foremost rather than their disability or neurodivergence.



It is hoped this exhibition will lead to conversations looking at how museums and galleries can make changes for better access.

THE ARTISTS IN THE EXHIBITION



Over the next few pages we will introduce you to the eight artists in the exhibition.



+



Each artist has a few artworks on show, and a film nearby about their art practice.



All of the films have captions (words on the screen) and a BSL interpreter on the screen. By BSL we mean, someone doing British Sign Language for deaf audiences.

CAMERON MORGAN - GALLERY 1



Cameron Morgan is an artist working from a studio in Glasgow. This is in Scotland.



The artwork in this exhibition shows Cameron's love of different cameras from across the years. Some he has painted onto canvas.



And for others, he has looked at old photographs and made the cameras out of clay. He has glazed (special paints for ceramics) them in very bright colours.



Cameron works in a studio called Project Ability.

RICHARD HUNT - GALLERY 1



Richard Hunt is an artist working from a studio in Oxford. This is north west of London.



Richard loves the beach, the ocean and old films. The works in this exhibition are all about the sea and creatures within it.



Richard often works alongside Sonia Boué. Sonia has supported Richard to work bigger and to try out new materials.



Richard works in a studio called Shadowlight Artists.

JAMES GLADWELL - GALLERY 2



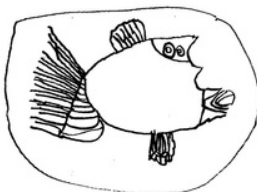
James Gladwell is an artist working from a studio in Norfolk. This is in the east of England.



James' artwork is all hand-stitched. He uses a stitch called cross-stitch, where small stitches are placed next to each other very tightly to create his pictures.



Sometimes his work is very small, but sometimes he does very large stitched works like this one here.



Barrington Farm

James works in a studio called Barrington Farm.

LESLIE THOMPSON - GALLERY 2



Leslie Thompson is an artist working from a studio in Manchester. This is in the north west of England.



Leslie's drawings show scenes from television and film from 1970–1990. They are drawn from his memory. He often writes little things next to them too.



Leslie also loves animals. In this exhibition you will see some small animals made out of clay.

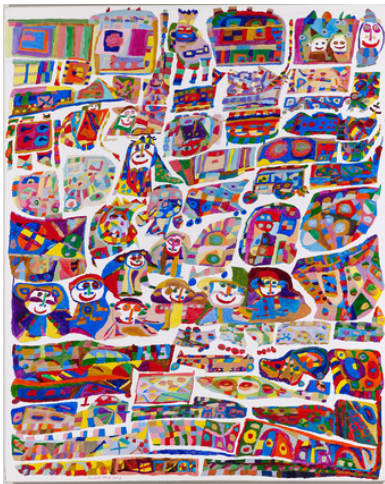
**Venture
Arts** 

Leslie works in a studio called Venture Arts.

MICHELLE ROBERTS - GALLERY 2



Michelle Roberts is an artist working from a studio in Hastings. This is on the south coast of England.



Michelle works on large canvases. She often draws things from events she has been to. Sometimes the artworks are of films she has watched on TV.



More recently, Michelle has drawn onto concertina books. By concertina we mean long pieces of paper that fold up in a zig zag fashion, and then have a hard cover attached to each end.

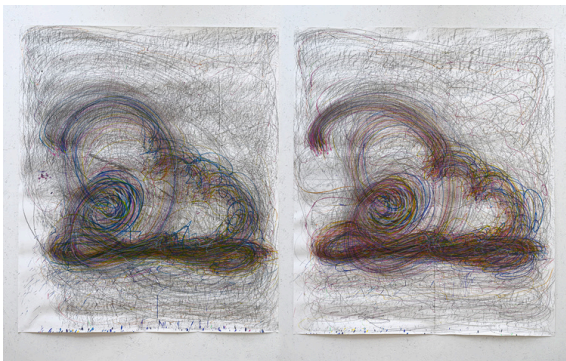
projectart works

Michelle works in a studio called Project Art Works.

NNENA KALU - GALLERY 3



Nnena Kalu is an artist working from a studio in south London.



Her 2D work features repeating circular patterns on 2 sheets of paper. She works on 2 drawings with the paper side-by-side.



Her 3D sculptures are made by wrapping different materials around things like bits of tube. The materials she uses include black VHS tape, brightly coloured masking tape, and cut up bits of fabric.

SIDDHARTH GADIYAR - GALLERY 3



Siddharth Gadiyar is an artist working from a studio in Hastings. This is on the south coast of England.



His work is very big in size, on large sheets of very thick paper. He paints on this with lots of different bright colours, often in different patterns.



Siddharth often finishes the work in one three-hour long studio session each week.

1 work x 3 hours

projectart works

Siddharth works in a studio called Project Art Works.

THOMPSON HALL - GALLERY 5



Thompson Hall is an artist working from a studio in north London.



Thompson's work is often inspired by politics and things that are happening around him in the world. This includes the increased use of food banks (that this painting is about), where people can go to get food when they are really in need.



Thompson includes symbols that people might know of, to show his emotions, and so that people can relate to the work. Here is a close-up example.



Thompson works in a studio called ActionSpace.

WALL ACTIVITY IN GALLERY 4



On a wall in Gallery 4, there is an activity that everyone can take part in.

Please grab a pen and a piece of paper from the side.

Please answer the following question: When was the last time you felt seen or supported?

By this we mean things like:

- when was the last time someone paid attention to what you said, and who was it?
- when was the last time that someone showed an interest in one of your interests, and who was it?
- when was the last time you felt seen in a space, and where was it?

Hang it on the wall when you've finished.

CONTACT DETAILS

If you want to know more or have any questions at all, please ask a staff member, or look at the below:



www.nottinghamcastle.org.uk



nottingham.castle@nottinghamcity.gov.uk



Open daily 10am–5pm

0115 876 3100



Instagram

[@nottinghamcastle](https://www.instagram.com/nottinghamcastle)

[@shift_voices](https://www.instagram.com/shift_voices)